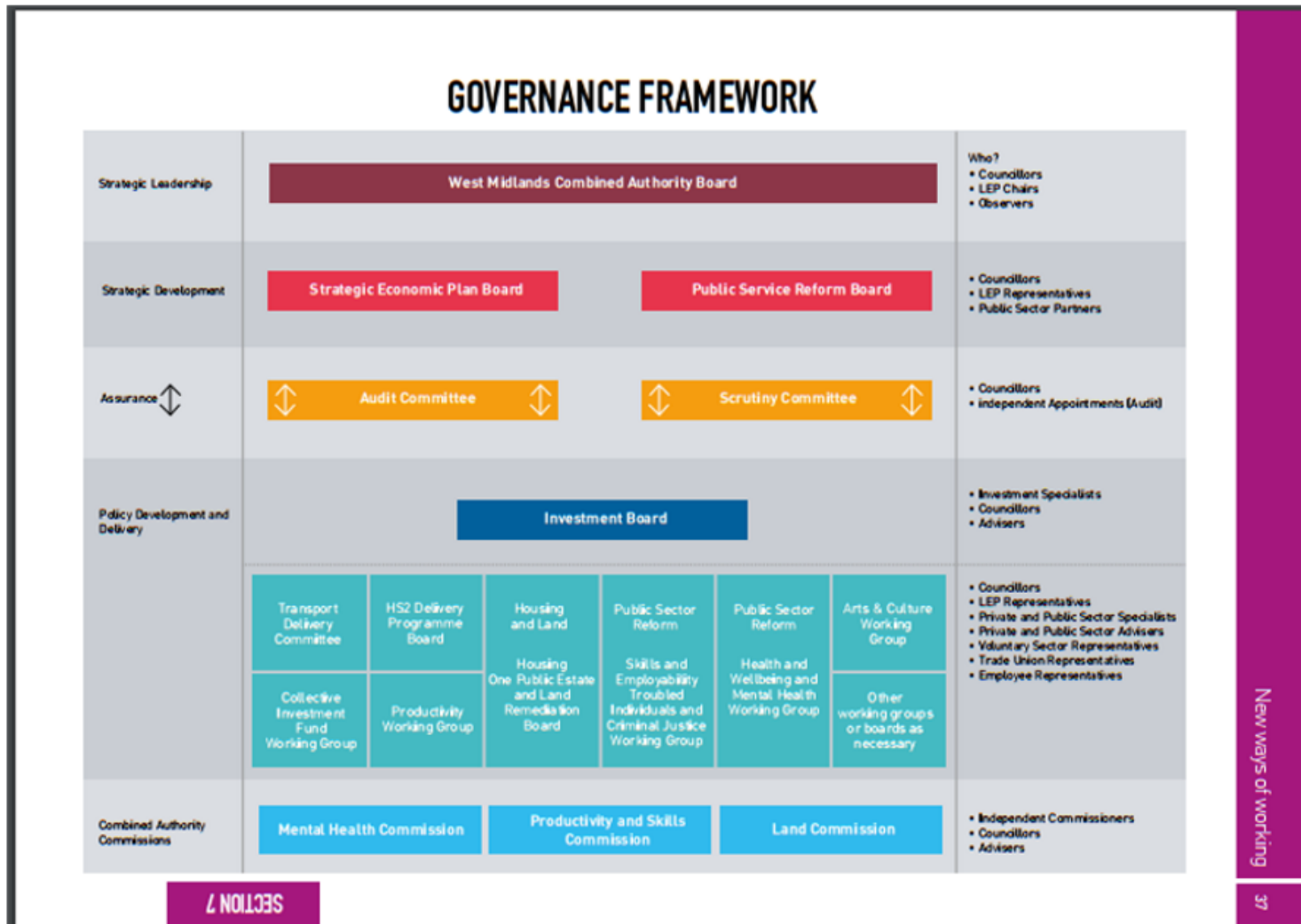


Suggested Model 1

Do Nothing

Exec Role - Combined Authority Cabinet Member & existing TDC

Scrutiny - WMCA Q&S (balanced, cross-authority committee, chaired by non-executive member)

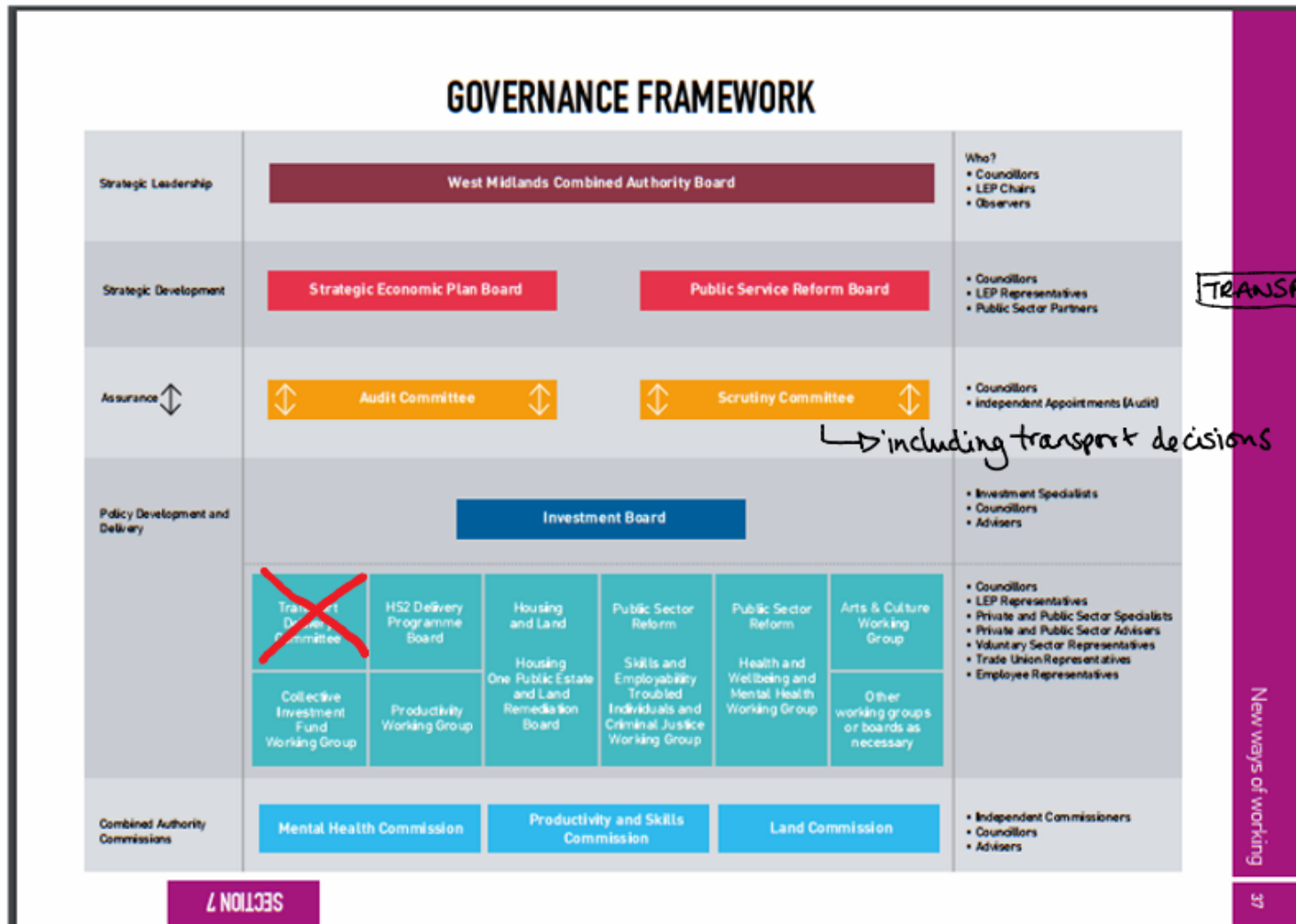


Suggested Model 2

Transport Advisory Committee Model

Exec Role - Combined Authority Cabinet Member, chairing advisory committee of LA cabinet members

Scrutiny - WMCA Q&S (balanced, cross-authority committee, chaired by non-executive member)

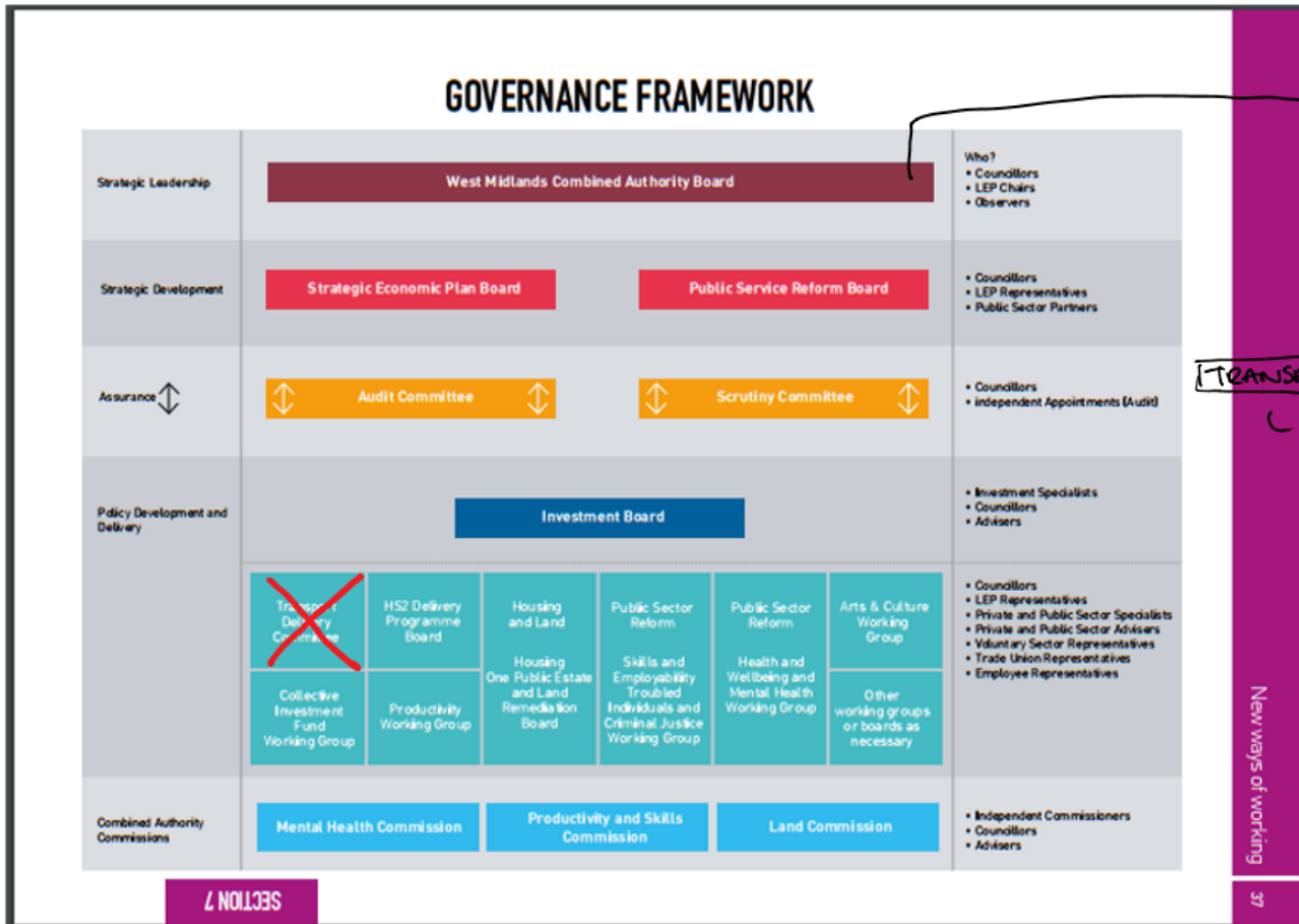


Suggested Model 3

Manchester Model

Exec Role - Combined Authority Cabinet Member

Scrutiny & Advisory - Politically balanced cross-authority committee, chaired by non-executive member - not WMCA Q&S



executive decision making for transport to be with GA head Member

TRANSPORT O+S COMMITTEE

politically balanced, chaired by non-exec member. To be involved in pre-decision scrutiny

New ways of working

37

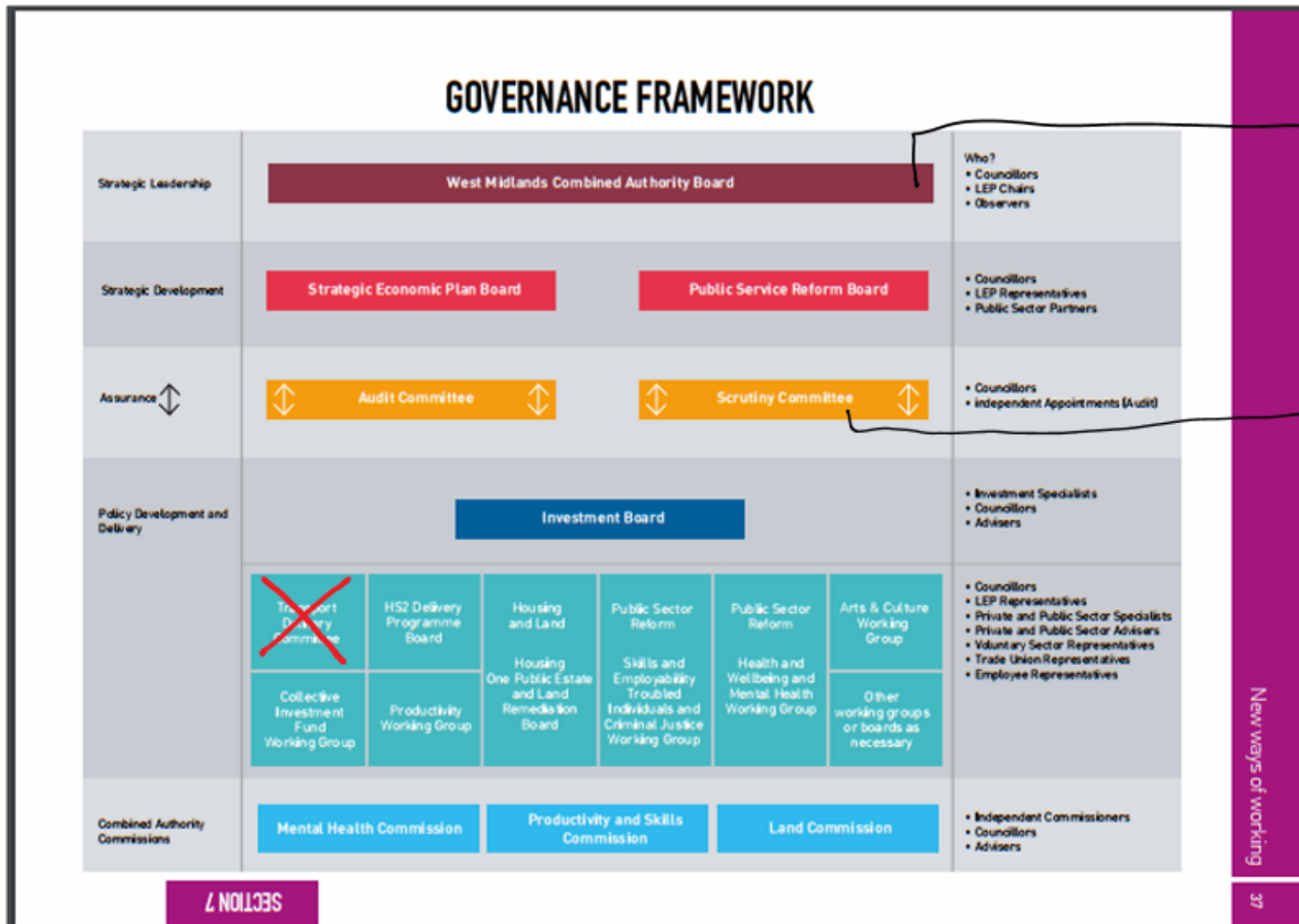
SECTION 7

Suggested Model 4

Disestablish TDC

Exec Role - Combined Authority Cabinet Member

Scrutiny - WMCA Q&S (balanced, cross-authority committee, chaired by non-executive member)



executive/decision making for transport to be with CA Lead Member

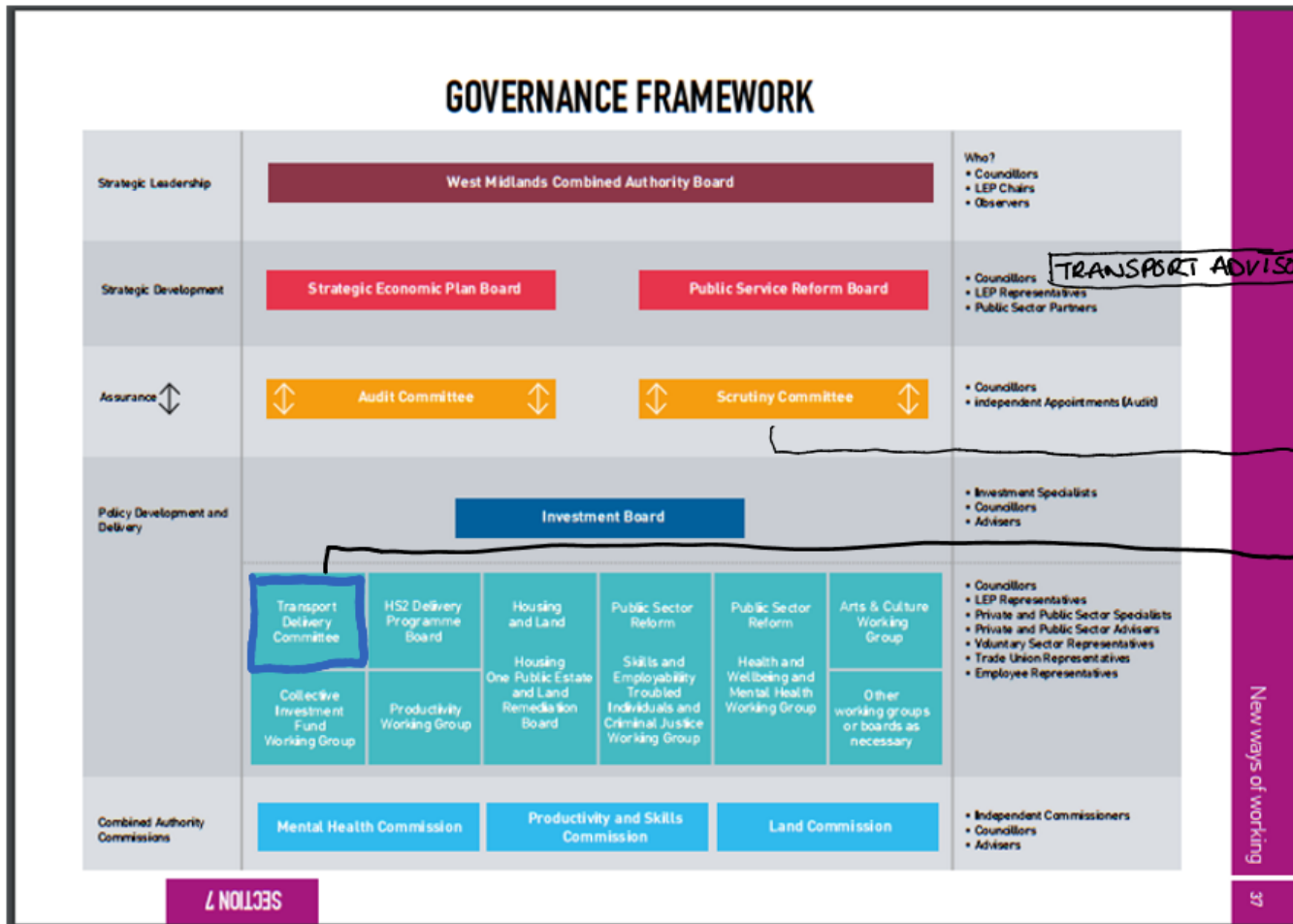
Scrutiny of transport decisions to be here

Suggested Model 5

Reduce and refine the role of the TDC

In this model there are three distinct and separate functions within transport governance.

- Smaller TDC which has a public facing, consultation and engagement function
- Executive advisory function
- Overview and scrutiny function



TRANSPORT ADVISORY COMMITTEE

CA Cabinet Member as chair
LA Transport Cabinet member as lead member for transport

Scrutiny of transport decisions to lie here

AMENDED TDC

role to include the public facing liaison between LA's and members of the public